



FI O R E N Z A T O

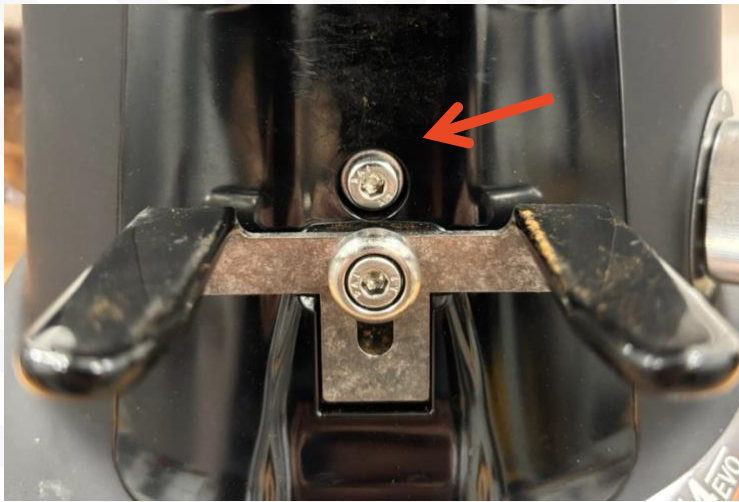
How to Replace The
scale board//Come
sostituire la scheda
bilancia



Tools//Attrezzi:

-Allen Key 4 // Chiave a brugola 4

Allen Key 3 // Chiave a brugola 3



Remove the Hex head screw indicated in order to remove the scale plaque // Rimuovere la vite a brugola per togliere la placca e il supporto portafiltro



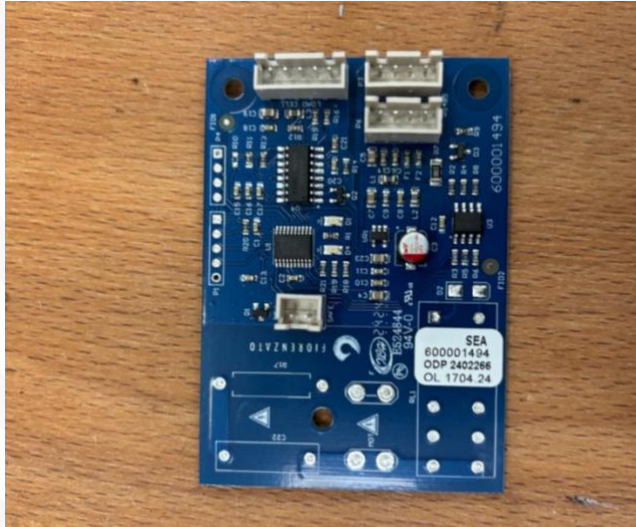
Remove the Hex head screw in order to remove the scale assembly // Rimuovere la vite a brugola per togliere l'assieme bilancia



Remove the connections to free up the scale assembly//
Rimuovere le connessioni elettriche per liberare l'assieme bilancia



Open up the four clip indicated in **ORANGE** to open up the board socket//
Aprire le clip indicate in **ARANCIONE** per poter accedere alla scheda



Replace the scale board//
Sostituire la scheda

NOTES